

Greater Northwest Rail Summit

Amtrak Update

Nicole Bucich, VP Network Development

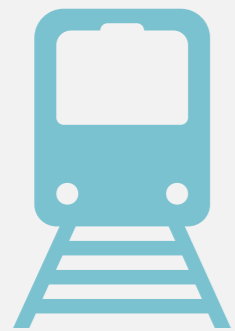
October 8, 2024



Amtrak Network Development's Role



Guide and facilitate network development and expansion initiatives from planning through implementation



Primary **Corridor Identification and Development (CID) Program** point of contact with FRA and external stakeholders



Engage and coordinate multiple contributors across Amtrak

Amtrak Overview & Existing Service



Who is Amtrak?

Amtrak connects 500+ destinations in 46 states, the nation's capital, and three Canadian provinces



23,000+ employees,
and growing



Operating
300
trains daily



Over **21,400+**
route miles



We welcomed
32.7M customers
in FY 24 -
+14.8% YoY
growth from FY 23

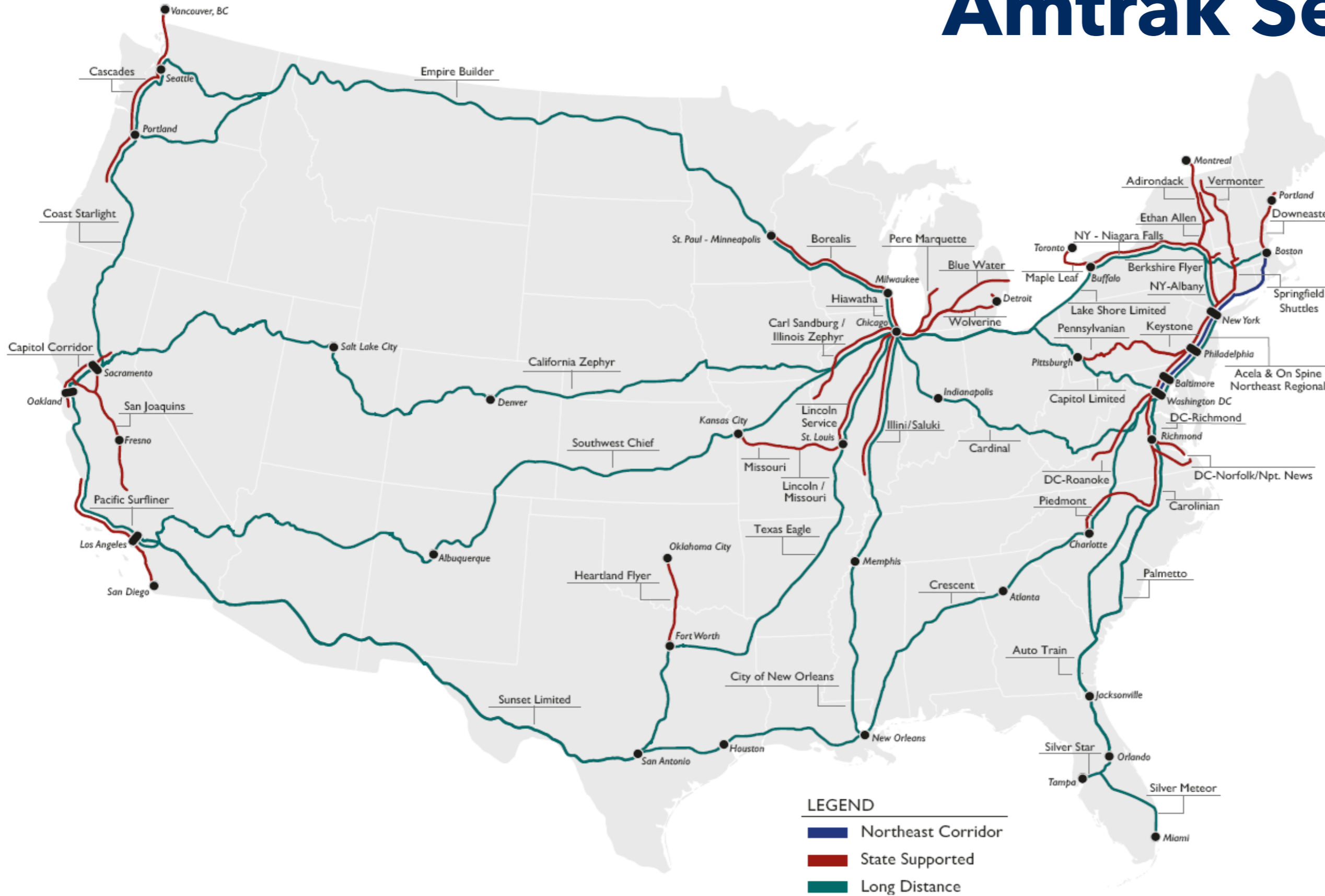


30+ host railroads



10+ tenants

Amtrak Service Lines



15
Long Distance
Routes

28
State
Supported
Services

21
State & Local
Partners

Intercity Rail Types

Intercity Rail



Connects multiple cities and regions over long distance (typically >100 mi)

Regulated by Federal Railroad Administration (FRA)

More amenities

Greater distance between stations (>25 mi)

Faster travel time

Amtrak offers two national intercity rail service models:

State-Supported Service

- Routes under 750 miles
- operation funded by state/local sponsors

Long Distance Service

- Routes over 750 miles
- Operation funded by federal government

Greater Northwest Service Summary

Amtrak Cascades

Vancouver, BC - Eugene
STATE SUPPORTED

- Core service 6 RTs daily Seattle-Portland
- 18 Stations (17 in WA/OR)
- FY23 ridership was 668.4K, FY24 ridership (thru July) was 742.2K
- June 2024 was busiest month on record for Oregon stops, 36% increase in ridership from June 2023

Coast Starlight

Seattle - Los Angeles
LONG DISTANCE

- Daily service
- 30 Stations (12 in WA/OR)
- FY23 ridership was 337.4K, partial FY24 ridership (thru July) is 295.7K

Empire Builder

Chicago - Seattle/Portland
LONG DISTANCE

- Daily service
- 46 Stations (12 in WA/OR)
- FY23 ridership was 349.0K, FY24 ridership (thru July) is 316.1K

3 stations are served by all 3 PNW services, including Portland, Vancouver (WA), and Seattle

Future Service & Benefits



Greater NW Future Expansions

Corridor ID Program

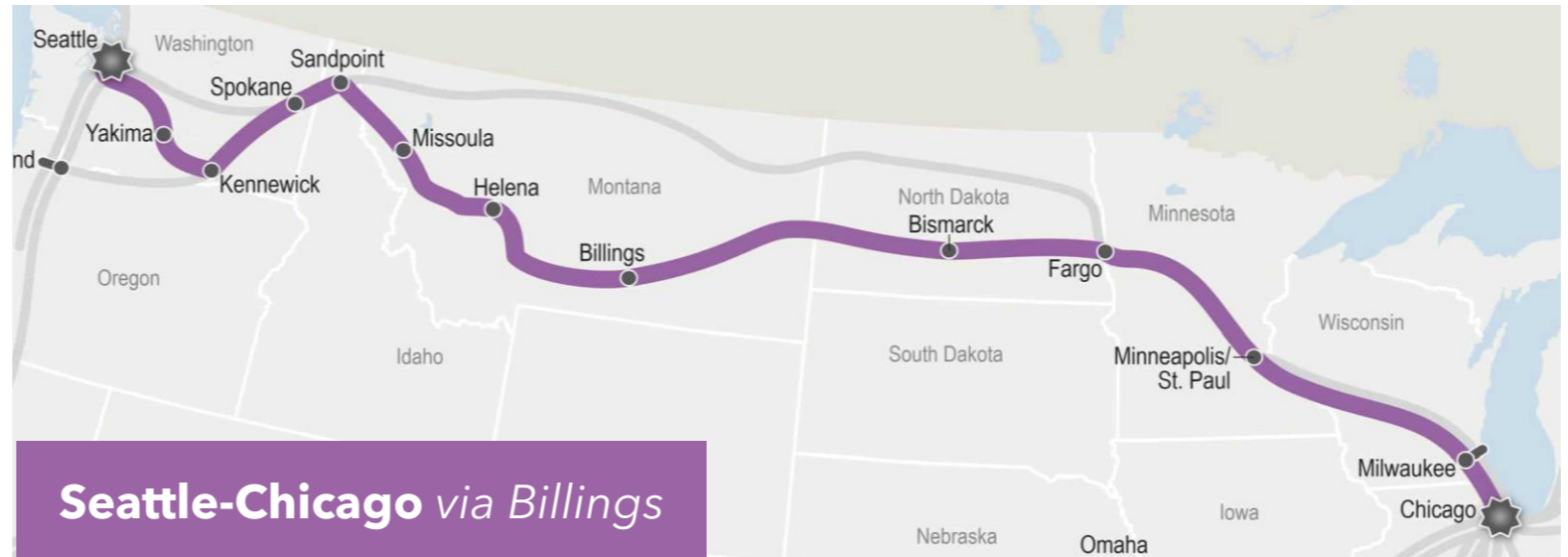
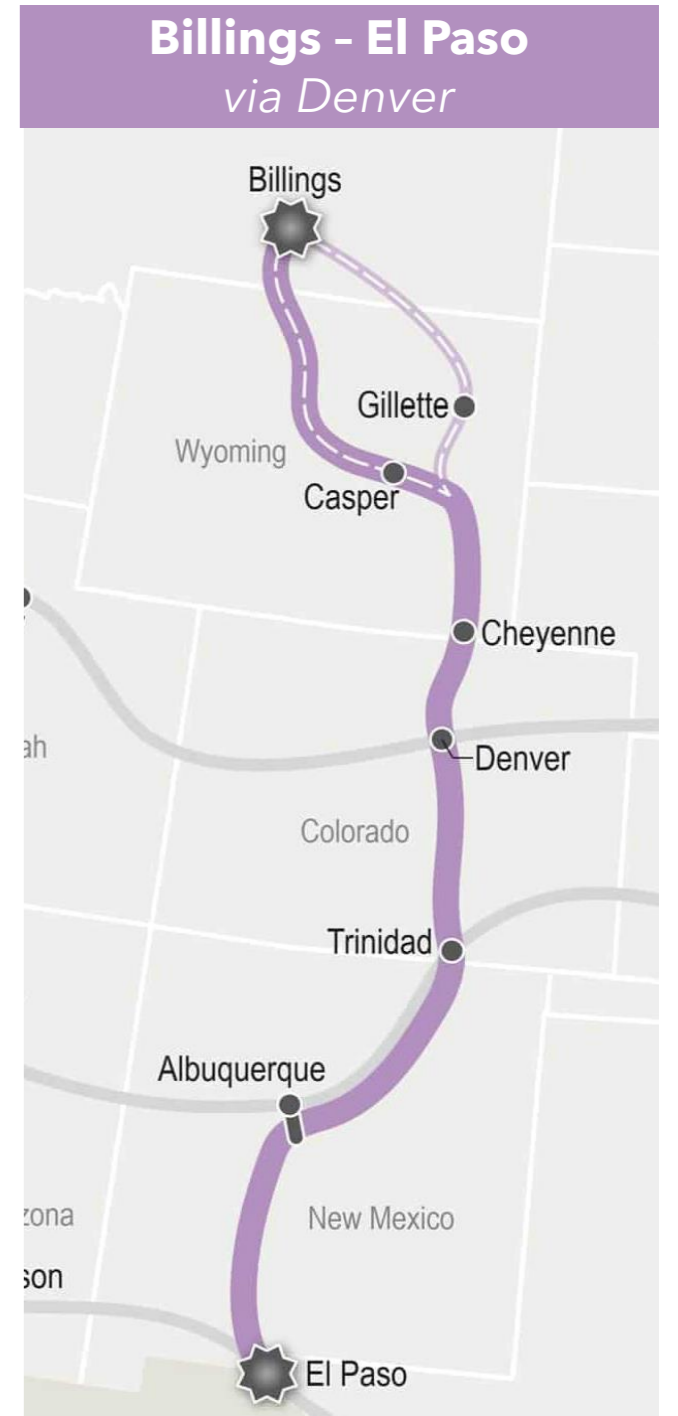
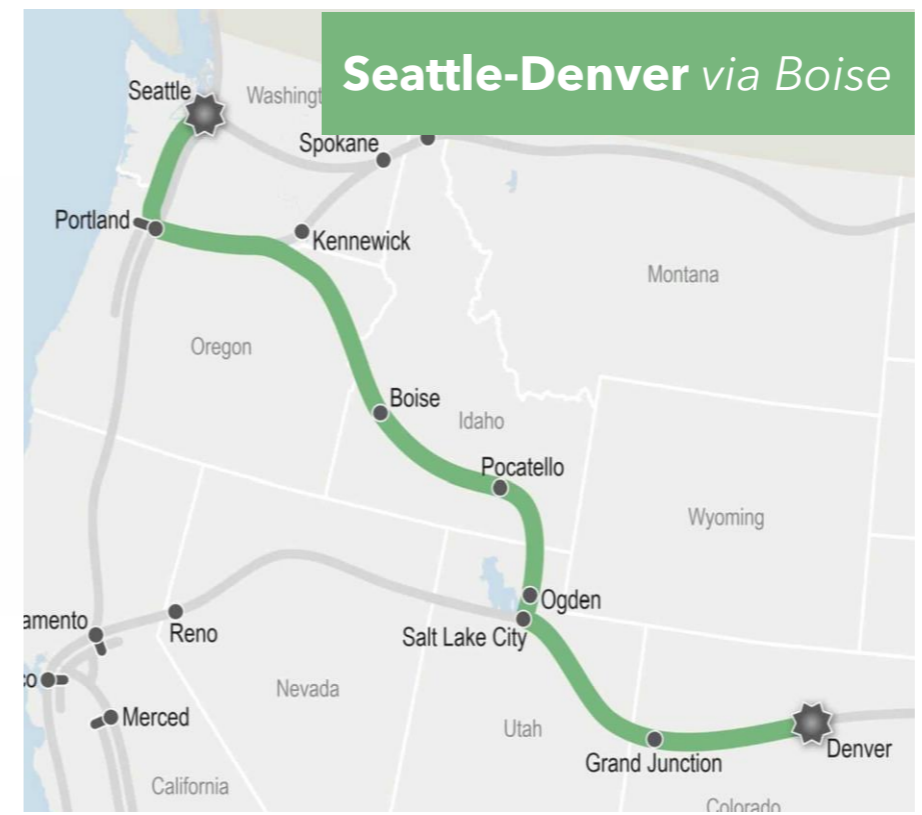
FRA Long Distance Service Study



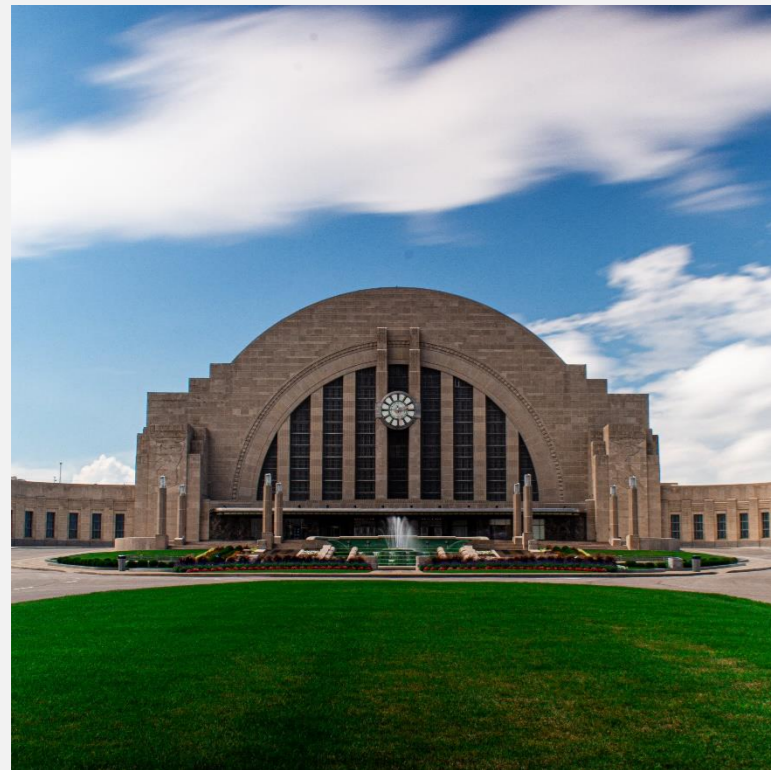
Amtrak Cascades
(Eugene - Portland - Seattle - Vancouver)

Cascadia High Speed Rail (UHSRT)
(Portland - Seattle - Vancouver)

Big Sky North Coast Corridor
(Portland - Seattle - Vancouver)



Amtrak-led CID Awards



Daily Cardinal Service



Daily Sunset Limited Service

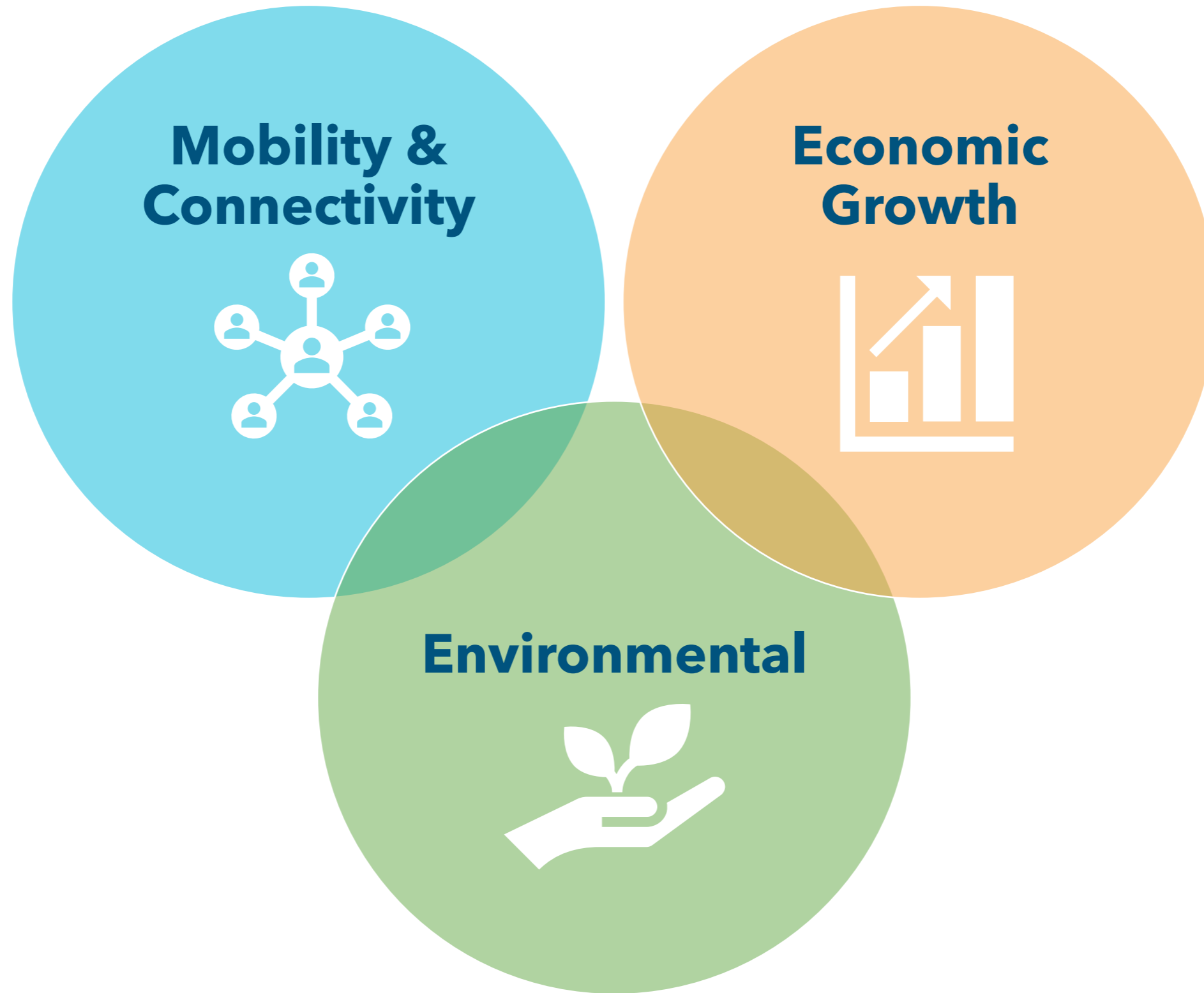


Amtrak to Long Island

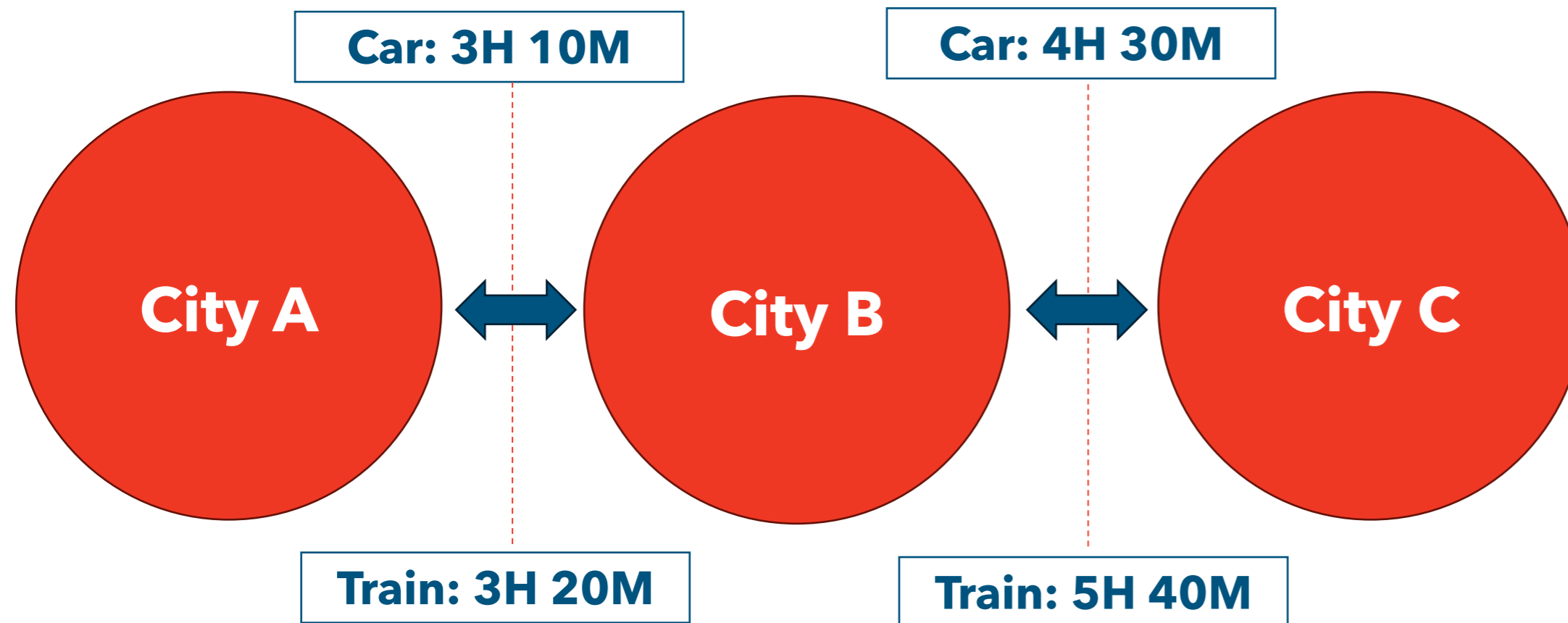


Amtrak Texas High Speed Rail

Benefits of Intercity Rail



Travel Time vs Productive Time



Train time is 100% productive while driving is lost time

Key Takeaways



Key Takeaways



This is a new era at Amtrak



Passenger rail benefits are real



Many Greater NW opportunities



Amtrak has tools to help!